

EXTERIOR PANEL ELEVATION  
SCALE: 1 : 1

INTERIOR PANEL ELEVATION  
SCALE: 1 : 1

TYPICAL NEMA 4X JUNCTION BOX

BILL OF MATERIAL				
ITEM	QTY	DESCRIPTION	MANUFACTURER	CATALOG NUMBER
1	AS REQ'D	NEMA 4X ENCL. CONTINUOUS-HINGE WITH CLAMPS, 305X254X152MM	HOFFMAN	A121006CHNFSS
2	AS REQ'D	PANEL FOR ITEM 1	HOFFMAN	A12P10
3	AS REQ'D	LAMACOIDS	-	
4	AS REQ'D	35mm DIN RAIL	PHOENIX CONTACT	0801733
5	AS REQ'D	TERMINAL END CLAMP – CLIPFIX 35	PHOENIX CONTACT	3022218
6	AS REQ'D	FEED-THROUGH TERMINAL – UT 4-MTD	PHOENIX CONTACT	3046184
7	AS REQ'D	TERMINAL END PLATE – D-UT 2,5/4 TWIN	PHOENIX CONTACT	3047141
8	AS REQ'D	GROUND BAR, 6 TAPS	ILSCO	D167-6
9	1	30MM PUSH BUTTON, TYPE SK, PILOT LIGHT, 120VAC, RED PLASTIC, NEMA 4X	SCHNEIDER ELECTRIC	9001SKP38R31
10	1	22MM HARMONY XB4, 2 POSITION KEY SWITCH SELECTOR, 1 NO CONTACT	SCHNEIDER ELECTRIC	XB4BG21
11	1	4P CONTROL RELAY	RELECO	C4-A40
12	1	RELAY SOCKET – USED FOR ITEM 11	RELECO	SB-4

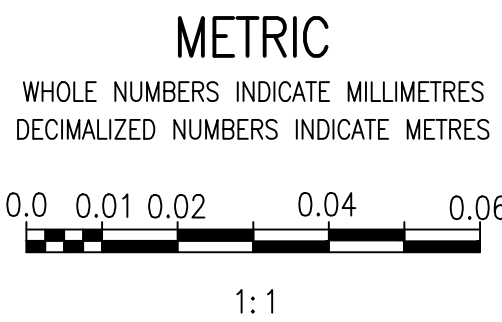
GENERAL NOTES:

- ALL POWER AND 120 VAC WIRING ARE TEW/MTW 300V, 105°C INSULATION, STRANDED COPPER, 12 AWG OR LARGER WHERE CURRENT REQUIREMENTS DICTATE AS PER CEC REQUIREMENTS.
- ALL 24 VDC CONTROL WIRING IS TEW/MTW 300V, 105°C INSULATION, STRANDED COPPER, 16 AWG.
- COMPONENTS ARE LABELED AS SHOWN ON THE DRAWINGS.
- TESTED ALL WIRING AND COMPONENTS FOR FUNCTIONAL OPERATION, CORRECT CONNECTION, CONTINUITY AND INSULATION INTEGRITY. DOCUMENTED ALL TEST RESULTS.
- ALL MAJOR COMPONENTS INSIDE THE PANEL ARE LABELED WITH LAMACOIDS IN ACCORDANCE WITH MAJOR DESCRIPTIONS ON THE DRAWINGS.
- PROVIDED WIRE BARREL FERRULES FOR ALL WIRING.
- ALL TERMINAL BLOCKS ARE NUMBERED AS SHOWN IN THE DRAWINGS, COMPLETE WITH GROUP LABELING.
- ALL WIRES ARE MARKED AS INDICATED ON THE DRAWINGS.

SPECIFIC NOTES:

- 1 PROVIDE NEW CHLORINE EMERGENCY BYPASS SWITCH PANEL AT TONNER SCALE ROOM. REFER TO DRAWING 1-0640M-A0026-0001 FOR WIRING DETAILS.

1-0640C-E0015-001	ELECTRICAL EQUIPMENT AND INSTRUMENTATION PLAN, CHLORINE BUILDING
1-0640C-A0026-001	LOOP DIAGRAM, CHLORINE EMERGENCY ISOLATION SYSTEM
DRAWING NUMBER	REFERENCE DRAWINGS



00	ISSUED FOR TENDER AND CONSTRUCTION	2025/04/30	VE VE
NO.	REVISIONS	DATE	DESIGN CHECK

<b>AtkinsRéalis</b> 148 Nature Park Way, Winnipeg, Manitoba Canada R3P 0X7 204-786-8080	
DESIGNED BY: V. ELIMBAN	CHECKED BY: V. ELIMBAN
DRAWN BY: V. ELIMBAN	APPROVED BY: V. ELIMBAN
SCALE: 1 : 1	ISSUED FOR CONSTRUCTION BY: M. SKINNER DATE: 2025/04/30
DATE: 2023/10/03	CONSULTANT NO.:

ENGINEER'S SEAL

<b>THE CITY OF WINNIPEG</b> WATER AND WASTE DEPARTMENT			
MCPHILLIPS PUMPING STATION			
TONNER SCALE ROOM BYPASS SWITCH PZ-809-HS-1 LAYOUT			
CITY DRAWING NUMBER 1-0640M-A0025	SHEET 001	REV. 00	SIZE A1